

# Denti® Kone Short

*two-stage implant system*

## HEX & TUBE CONNECTION

for the strong mechanical connection,  
and for the long-term stability

## SPECIAL FINE-PITCH THREAD

with small lead angle on the neck  
of the implant to preserve the level  
of the peri-implant bone quality

## TWO-STAGE

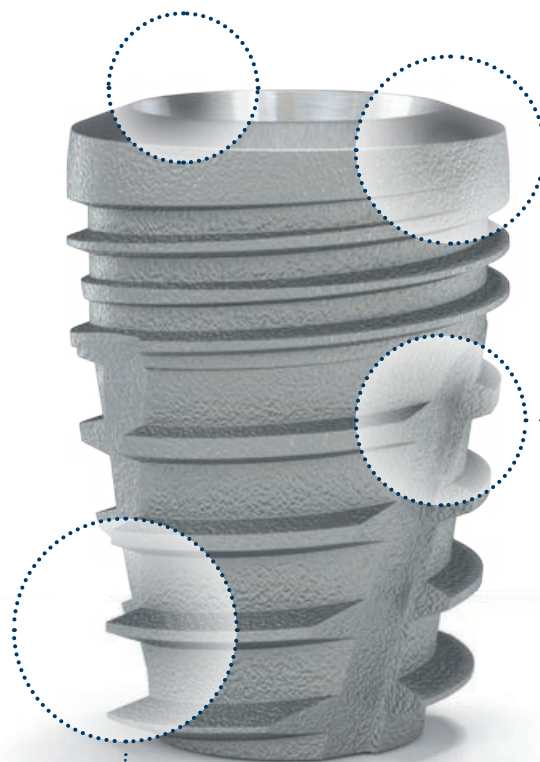
ROOT FORM GEOMETRY  
for the optimal distribution  
of the occlusal force in the  
bone tissue

## WIDE, DEEP THREAD

STRUCTURE  
for an excellent primary stability  
even in case of lower bone quality

## SUPERHYDROPHILIC SURFACE

DESIGN  
for quick and reliable osseointegration





## DENTI® KONE SHORT

### SURFACE

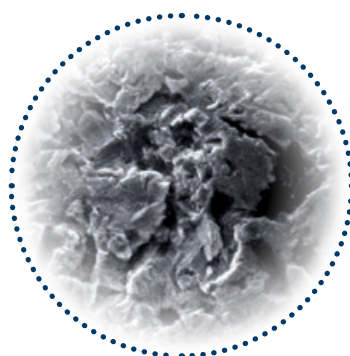
The Denti® implants' surface is the combination of a physical and mechanical surface treatments (sandblasting and chemical treatment). The surface of all implants connecting to the bone shows clear titanium-oxide (rutile) crystal structure which was first micro-roughened using the large particle "sand blasting" technique then thickened with passivation. This micro-roughened, passivated surface design with its high surface energies is the guarantee for the rapid and safe formation and permanent adherence of the bone tissue on the surface of the Denti® implants. Its highly micro-porous surface ensures a stable implant-bone connection thus creating an optimal condition for successful treatment. According to clinical control studies, the success rate of Denti® implants has been above 97% over the past 27 years.

### MATERIAL

THE DENTI® IMPLANTS MADE OF UNALLOYED, PURE TITANIUM (Grade 4)



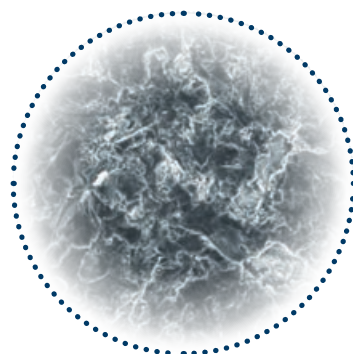
Raw processed surface



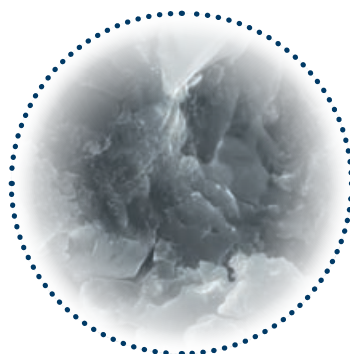
Sand-blasted surface



Passivated surface



Surface microstructure of Denti implants (MPS, SEM 500x)



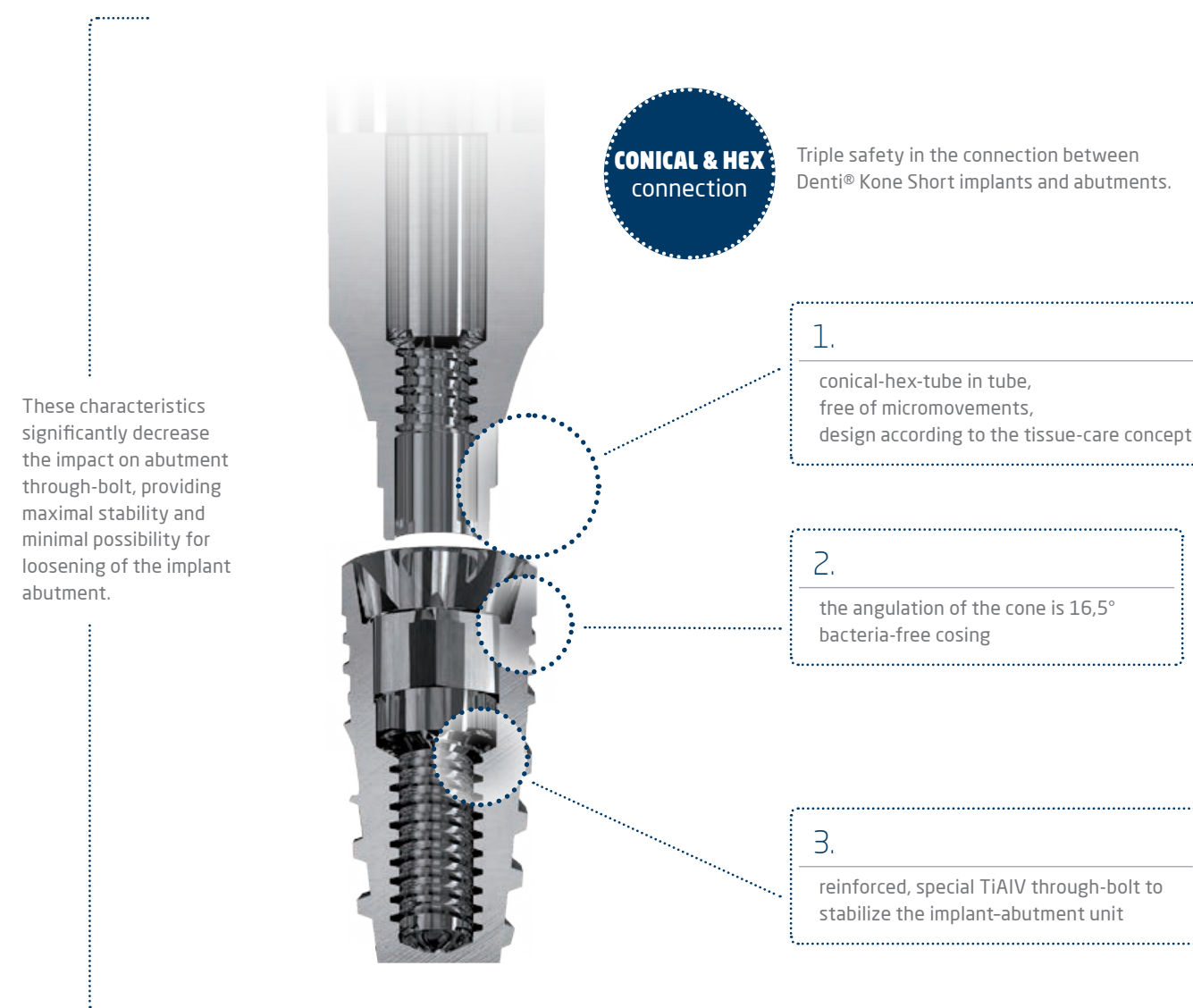
Surface microstructure of Denti implants (MPS, SEM 10.000x)



## CONNECTION

### IMPLANT – ABUTMENT CONNECTION

The connection between the implant body and the abutment of Denti® implants is safe according to modern mechanical requirements, and it guarantees long-term stability for the abutments and the assembly on them.

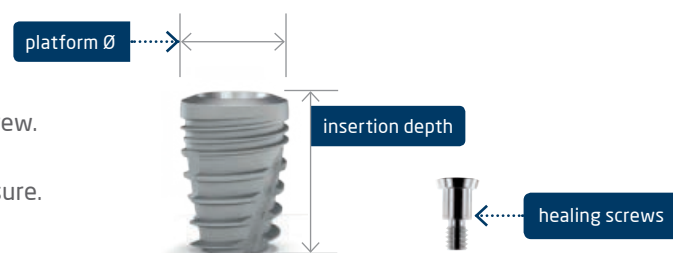




# IMPLANT RANGE

## DK Short IMPLANT RANGE

The implants are delivered together with the healing screw.  
Only single use of the healing screw is suggested.  
When tightening the healing screw use only finger pressure.



### Denti® DKS implants Ø 4,3 mm

Reference No.	Insertion depth (mm)	Platform Ø (mm)
K 1043-065	6,5	4,8
K 1043-080	8,0	4,8



### Denti® DKS implants Ø 4,8 mm

Reference No.	Insertion depth (mm)	Platform Ø (mm)
K 1048-065	6,5	5,3
K 1048-080	8,0	5,3



### Denti® DKS implants Ø 5,3 mm

Reference No.	Insertion depth (mm)	Platform Ø (mm)
K 1053-065	6,5	5,8
K 1053-080	8,0	5,8



### Denti® DKS implants Ø 5,8 mm

Reference No.	Insertion depth (mm)	Platform Ø (mm)
K 1058-065	6,5	6,3
K 1058-080	8,0	6,3

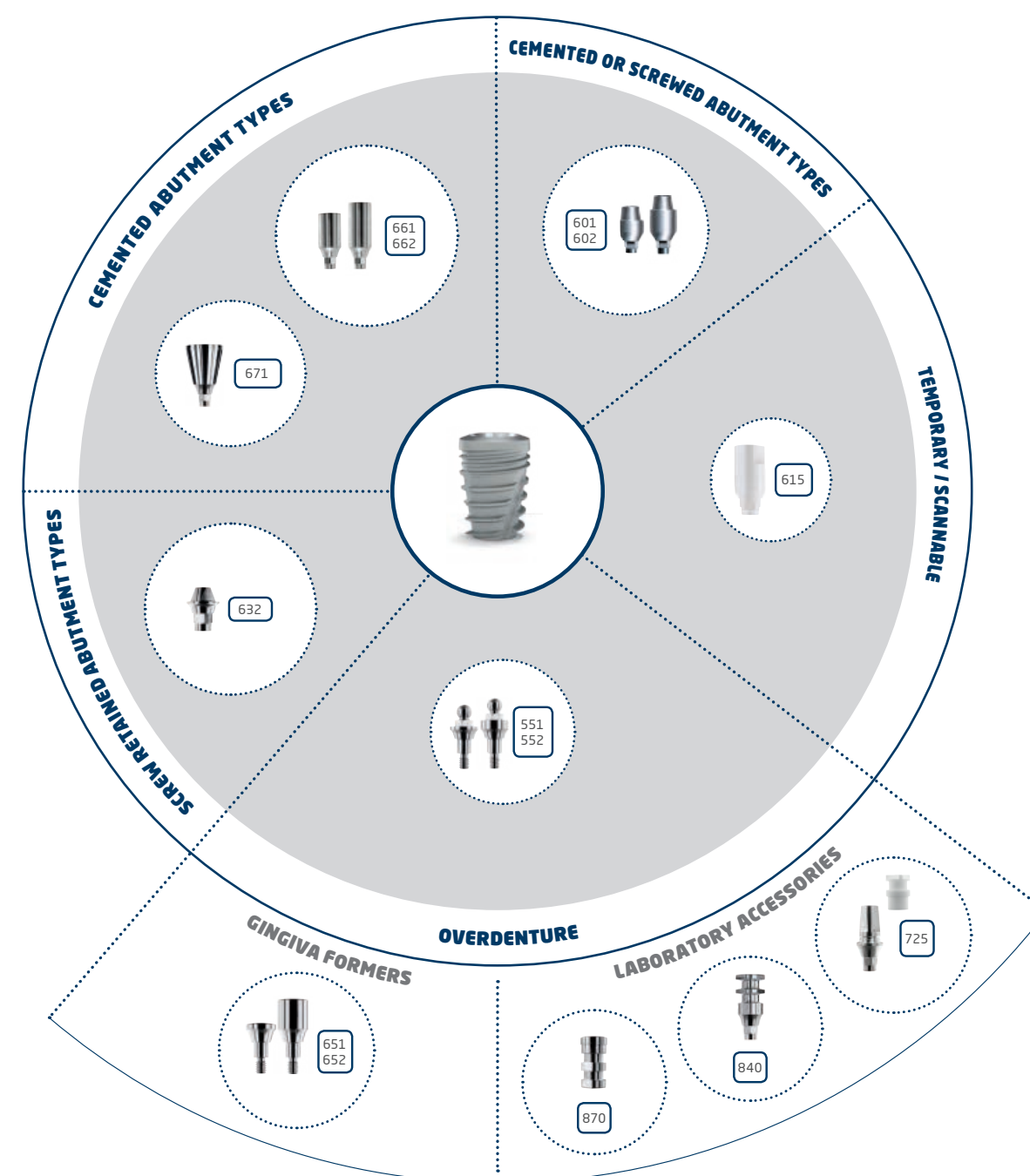


# PROSTHETICS



## PLATFORM SWITCH

connection means that the connection between implant and the abutment will be established on a 17,5° tapered connection that creates the Tissue Care Concept.





## SURGICAL TRAYS

### INITIAL DRILLS

For DKS implants

Reference No.		Ø mm	Cutting depth (mm)
8000-067	Initial drill	Ø 2,00	16,0
8000-066	Spherical drill		
8010-065	Pilot drill with stop	Ø 2,00	6,5
8010-080	Pilot drill with stop	Ø 2,00	8,0

### TWO-IN-ONE DRILLS

For DKS implants 4,3 mm

Reference No.	Cutting depth (mm)
K 8043-065	6,5 mm
K 8043-080	8,0 mm

For DKS implants 4,8 mm

Reference No.	Cutting depth (mm)
K 8048-065	6,5 mm
K 8048-080	8,0 mm

For DKS implants 5,3 mm

Reference No.	Cutting depth (mm)
K 8053-065	6,5 mm
K 8053-080	8,0 mm

For DKS implants 5,8 mm

Reference No.	Cutting depth (mm)
K 8058-065	6,5 mm
K 8058-080	8,0 mm



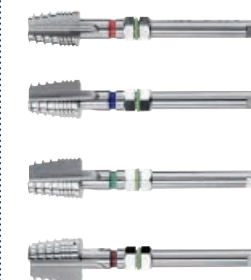
## SURGICAL UNITS

### TAP DRILLS

For DKS implants

Reference No.	Application
K 8043-030	for Ø4,3 mm implants
K 8048-030	for Ø4,8 mm implants
K 8053-030	for Ø5,3 mm implants
K 8058-030	for Ø5,8 mm implants

Both Denti® Kone Short self threading implants may require the use of tap drills (different for each diameter) only in case of hard bone.



### DRIVER

For DKS implants

Reference No.	Total length (mm)	Application
K 8455-570	25,0	For Ø 4,3- 4,8-5,3-5,8 DKS implants



## PROFESSIONAL SURGICAL SET

The surgical instrument trays can be used for the storage and sterilization of the instruments that belong to the implants of each system.

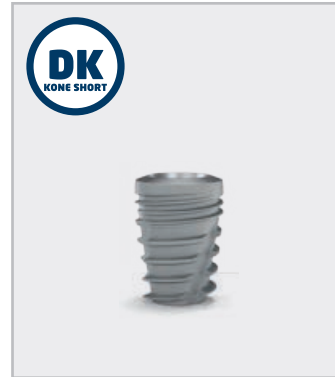
The surgical trays are made up of the following components: basic tray, holder, cover, colored rings, which may be exchanged when damaged.

SIZE OF THE Professional SURGICAL TRAY:  
195 mm x 50 mm x 90 mm.



# DENTI IMPLANT SOLUTIONS

## TWO-STAGE IMPLANTS



## ONE-STAGE IMPLANTS



**Denti**  
IMPLANT SOLUTIONS

[WWW.DENTISYSTEM.COM](http://WWW.DENTISYSTEM.COM)